



1. PRODUCT AND COMPANY INFORMATION

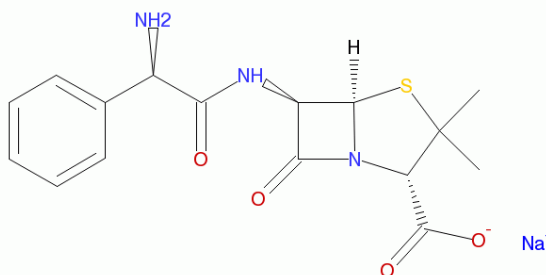
Distributed By: WG Critical Care, LLC.
120 Route 17 North
Suite 115
Paramus, NJ 07652 USA

Product Name: **Ampicillin for Injection, USP**

Product Code:
250mg Vial: 44567-100-10
500mg Vial: 44567-101-10
1g Vial: 44567-102-10
2g Vial: 44567-103-10
10g Vial: 44567-104-10

Common / Trade Name: Ampicillin Sodium

Structure:



Chemical Name: (1) 4-Thia-1-azabicyclo[3.2.0]heptane-2-carboxylic acid, 6-[(aminophenylacetyl)amino]-3,3-dimethyl-7-oxo-, monosodium salt, [2S-[2 α ,5 α ,6 β (S*)]]-;
(2) Monosodium D-(-)-6-(2-amino-2-phenylacetamido)-3,3-dimethyl-7-oxo-4-thia-1-azabicyclo[3.2.0]heptane-2-carboxylate

Molecular Formula: C₁₆H₁₈N₃NaO₄S MW: 371.39

UNII Code: UNII-JFN36L5S8K

CAS Number: 69-52-3

Chemical Family: Antibacterial
Product Use: Pharmaceutical
Product Type: Prescription Drug

Container Information: Vials

WG Critical Care, LLC.

Ampicillin for Injection, USP		Material Safety Data Sheet (MSDS)	
Version: 1.5	Issue Date: 5 August 2013		Page 1 of 6



1. PRODUCT AND COMPANY INFORMATION (CONT.)

General Phone Number: +1-847-549-3200
Customer Service Phone Number: +1-888-493-0861
Emergency Phone Number: +1-866-562-4708 (Prosar)

2. COMPOSITION / INFORMATION ON INGREDIENTS

<u>Ingredient</u>	<u>Weight %</u>	<u>CAS No.</u>
Ampicillin Sodium	100%	69-52-3

3. HAZARDS IDENTIFICATION

PRIMARY PHYSICAL AND HEALTH HAZARDS: May cause respiratory tract, eye, and skin irritation. May cause allergic respiratory and skin reaction

ROUTES OF ENTRY: Inhalation, eye/skin contact and/or ingestion

SIGNS & SYMPTOMS OF EXPOSURE: May cause sensitization by inhalation and skin contact. Irritating to eyes, respiratory system, and skin. May cause allergic reaction in penicillin-sensitive individuals.

CHEMICAL LISTED AS CARCINOGEN: **NTP:** NO **IARC:** NO **OSHA:** NO

4. FIRST AID MEASURES

EYE EXPOSURE: Immediately rinse eyes with plenty of water for at least 15 minutes. Keep eye wide open while rinsing. Seek medical advice.

SKIN EXPOSURE: Remove contaminated clothing immediately. Wash off immediately with plenty of water for at least 15 minutes. Obtain medical attention if skin reaction occurs.

INGESTION: Never attempt to induce vomiting. Flush mouth out with water immediately. Seek medical attention.

WG Critical Care, LLC.

Ampicillin for Injection, USP		Material Safety Data Sheet (MSDS)	
Version: 1.5	Issue Date: 5 August 2013		Page 2 of 6



4. FIRST AID MEASURES (continued)

INHALATION:	Use appropriate personal protective equipment. Move to fresh air and monitor breathing. If breathing becomes difficult, maintain ventilation, give oxygen as appropriate, and seek medical attention.
NOTE TO PHYSICIAN:	See patient package insert in shipping carton for complete information.

5. FIRE FIGHTING MEASURES

FLASH POINT:	Not Established
AUTO-IGNITION TEMPERATURE:	Not Established
FLAMMABLE LIMITS IN AIR:	Lower %: Not Established Upper %: Not Established
FLAMMABLE LIMITS:	Not Established
EXTINGUISHING MEDIA:	Water, carbon dioxide, dry chemical powder, polymer foam. Water is recommended for fires involving packaging.
UNUSUAL FIRE / EXPLOSION HAZARDS:	Carbon Oxides (CO _x), nitrogen oxides (NO _x), sodium oxides, sulfur oxides (SO _x) may be emitted upon thermal decomposition. Dust clouds are potentially sensitive to ignition from electrostatic discharge especially if finely divided.

6. ACCIDENTAL RELEASE MEASURE

SPILL:	Contain and collect spillage and place in container for disposal according to local regulations (See Section 13). Wipe surface area clean with soap and water. Avoid contact with strong oxidizing agents.
RELEASE TO AIR:	Prevent release to drains and waterways. Prevent release to the environment.
RELEASE TO WATER:	Refer to local water authority. Drain disposal is not recommended; refer to local, state, and federal disposal guidelines.

WG Critical Care, LLC.

Ampicillin for Injection, USP	Material Safety Data Sheet (MSDS)	
Version: 1.5	Issue Date: 5 August 2013	Page 3 of 6



7. HANDLING AND STORAGE

GENERAL HANDLING:	When handling pharmaceutical products, avoid all contact and inhalation of dust, fumes, mist, and/or vapors associated with the product. Keep away from sources of ignition.
STORAGE CONDITIONS:	Store at controlled room temperature between 20° – 25°C in the original packaging.

8. EXPOSURE CONTROLS / PERSONAL PROTECTION

RESPIRATORY PROTECTION:	If respiratory protection is used, the type of protection will depend upon air concentration present, required protection factor as well as hazards, physical properties of substance.
EYE PROTECTION:	Safety glasses with side shields or goggles are recommended.
VENTILATION:	General room ventilation is usually satisfactory. Use local exhaust ventilation if necessary.
SKIN PROTECTION:	Protect with disposable garments if direct skin contact is anticipated.
OTHER PROTECTIVE EQUIPMENT:	Chemical resistant gloves.
ADDITIONAL EXPOSURE PRECAUTIONS:	Wash hands and face before breaks and immediately after handling product.

9. PHYSICAL AND CHEMICAL PROPERTIES

PHYSICAL STATE:	Crystalline Powder	SPECIFIC GRAVITY:	Not Available
APPEARANCE AND ODOR:	White – Pale Yellow	EVAPORATION RATE:	Not Available
BOILING POINT:	Not Available	MELTING POINT:	205° C
VAPOR PRESSURE:	Not Available	SOLUBILITY IN WATER:	Soluble in water
VAPOR DENSITY:	Not Available	pH:	8.0-10.0

WG Critical Care, LLC.

Ampicillin for Injection, USP	Material Safety Data Sheet (MSDS)	
Version: 1.5	Issue Date: 5 August 2013	Page 4 of 6



10. STABILITY AND REACTIVITY

STABILITY:	Stable under normal conditions
INCOMPATIBILITY : (MATERIALS TO AVOID)	Not Available
HAZARDOUS POLYMERIZATION:	No hazardous polymerizations
HAZARDOUS DECOMPOSITION:	Formed under fire conditions: Carbon Oxides (CO _x), nitrogen oxides (NO _x), sodium oxides, sulfur oxides (SO _x)
CONDITIONS TO AVOID:	No conditions contributing to instability are known to exist. Avoid contact with strong oxidizing agents

11. TOXICOLOGICAL INFORMATION

ACUTE TOXICITY

COMPONENT	TYPE	ROUTE	SPECIES	DOSAGE
Ampicillin Sodium	LD ₅₀	Oral	Rat	5314 mg/kg
Ampicillin Sodium	LD ₅₀	Intraperitoneal	Rat	7400 mg/kg
Ampicillin Sodium	LD ₅₀	Subcutaneous	Rat	>5314 mg/kg

*Occasionally hypersensitivity reactions have been reported in patients on penicillin therapy. These reactions are more likely to occur in individuals with a history of penicillin hypersensitivity and / or a history of sensitivity to multiple allergens.

12. ECOLOGICAL INFORMATION

No applicable information found.

13. DISPOSAL CONSIDERATIONS

WASTE DISPOSAL: Dispose of any cleanup materials and waste residue according to all applicable laws and regulations

WG Critical Care, LLC.

Ampicillin for Injection, USP	Material Safety Data Sheet (MSDS)		
Version: 1.5	Issue Date: 5 August 2013	Page 5 of 6	



14. TRANSPORT INFORMATION

REGULATORY ORGANIZATIONS:

DOT: Not Regulated

ICAO / IATA: Not Regulated

IMO: Not Regulated

15. REGULATORY INFORMATION

Below is selected regulatory information chosen primarily for possible WG Critical Care use. This section is not a complete analysis or reference to all applicable regulatory information. Please consider all applicable laws and regulations for your city / state / country.

US Regulations

TSCA – No

CERCLA-No

SARA 302 – No

SARA 313 – No

OSHA Substance Specific - No

16. OTHER INFORMATION

As of the date of issuance, we are providing available information relevant to the handling of this material in the workplace. All information contained herein is offered with the good faith belief that it is accurate. THIS MATERIAL SAFETY DATA SHEET SHALL NOT BE DEEMED TO CREATE ANY WARRANTY OF ANY KIND (INCLUDING WARRANTY OF MERCHANTABILITY OR FITNESS FOR A PARTICULAR PURPOSE). In the event of an adverse incident associated with this material, this safety data sheet is not intended to be a substitute for consultation with appropriately trained personnel. Nor is this safety data sheet intended to be a substitute for product literature which may accompany the finished product.

WG Critical Care, LLC.

Ampicillin for Injection, USP		Material Safety Data Sheet (MSDS)	
Version: 1.5	Issue Date: 5 August 2013		Page 6 of 6